



BERTI[®]

A name you can trust

HYDR. MULCHER

FOR WHEEL AND TRACK LOADERS FROM 20 TO 150 HP

ENGLISH

A background of a network graph with grey nodes and lines on a light grey background. The text is overlaid in white.

A NAME

YOU CAN

TRUST

A solid orange horizontal bar at the bottom of the page.



BERTI

A NAME YOU CAN TRUST

Quality, strength and reliability: the foundations of our work. Our mission is to offer sturdy, long-lasting equipment designed to minimise the risk of downtime and always ensure the best possible performance in the field.

We are a family that believes in the values of collaboration and trust. Every day, with passion and dedication, we create hundreds of machines designed to meet the genuine needs of those who work the land.

We strictly adhere to the highest quality standards, guided by a strong sense of ethics and the responsibility to provide custom solutions for every client.

We look to the future with energy and determination, ready to evolve so we can stay by your side, with products that continue to make a real difference.

INDEX

FEATURES

page **6**

AF/SSL

page **18**

MINI/SSL

page **16**

KX/SSL

page **20**

KX/SSL AVT

page **24**

MX/SSL AVT

page **30**

MX/SSL

page **26**

DATA AND DIMENSION

page **32**

ROTORS

& TOOL HOLDERS

The tube, produced by extrusion, requires no welding and is therefore seamless – a guarantee of strength and reliability. This manufacturing process provides enhanced resistance to accidental impacts.

Square recess tool holders – why is this better?

When it comes to shredding, each design detail makes a

difference. The tool holder is one such detail.

The choice between a hexagonal and a square recess affects not only the shape, it directly affects the holding strength and clamping of the component.

This design feature translates into increased reliability, durability, and operational safety.





The square recess allows for a more precise and stable mechanical connection between the tool (hammer or knife) and the holder.

This means:

- No play between parts, ensuring longer life of the holder-bolt connection.

- Reduced risk of slippage or rotation of the bolt.
- Greater resistance to dynamic and torsional stresses.

Each Berti rotor is tested and balanced at high speeds to ensure top-quality performance.

FORESTRY

ROTORS

Every Berti rotor is created from a supply chain that is monitored at every stage, from design to final balancing. We use high-quality steel, precision-machined in our factories to ensure maximum strength and durability.

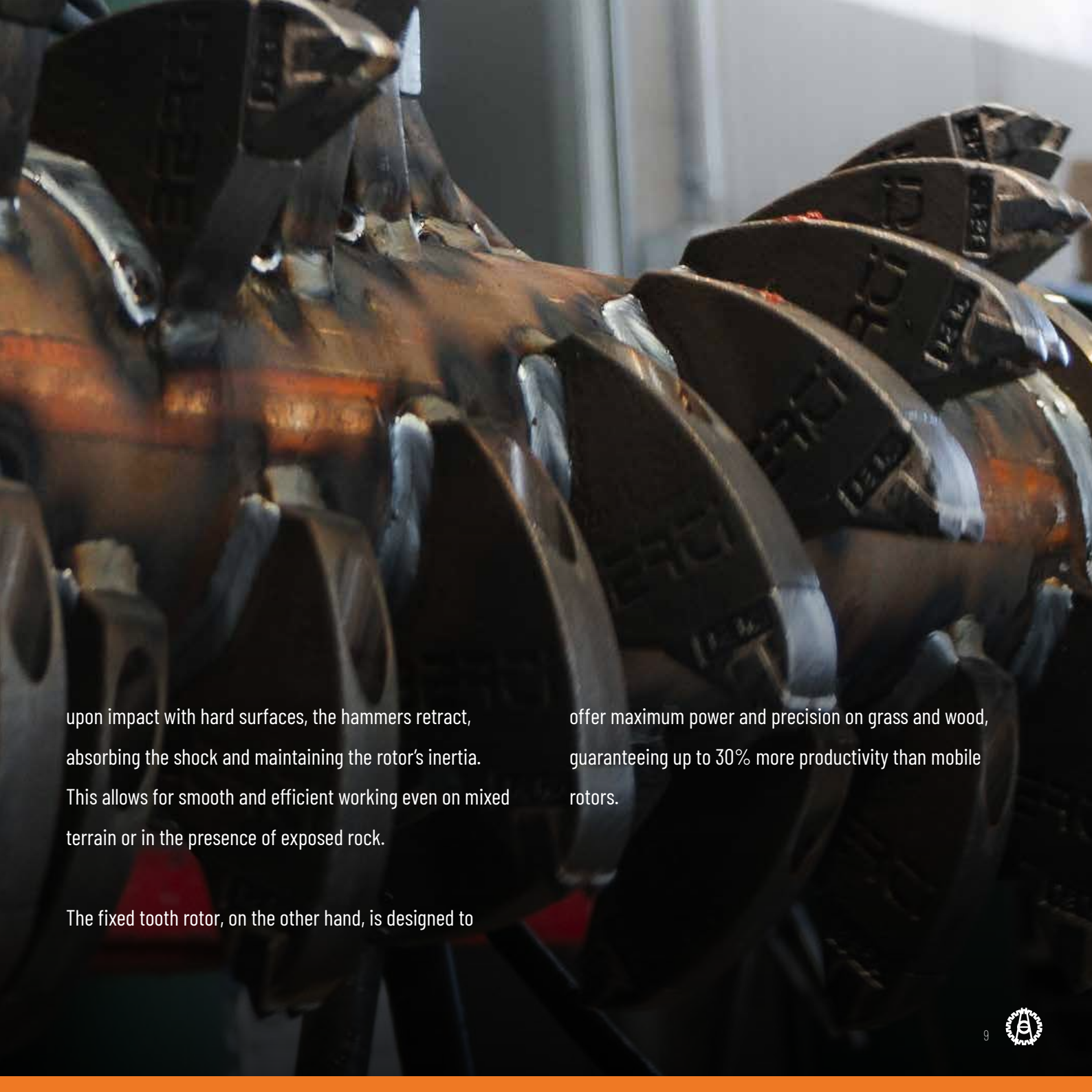
Every component is the result of a production process with attention to the smallest details. Every rotor we produce is

tested and balanced.

This is how every Berti machine offers the reliability and safety that professionals in the sector expect in all working conditions. Berti offers two different rotor configurations, designed to meet different operational requirements.

The mobile hammer rotor is the most versatile solution:





upon impact with hard surfaces, the hammers retract, absorbing the shock and maintaining the rotor's inertia. This allows for smooth and efficient working even on mixed terrain or in the presence of exposed rock.

The fixed tooth rotor, on the other hand, is designed to

offer maximum power and precision on grass and wood, guaranteeing up to 30% more productivity than mobile rotors.

SMOOTH CUT

THE EVOLUTION OF THE FOREST ROTOR

Completing the range, the **Smooth Cut** forestry rotor represents the latest evolution in Berti technology. Equipped with steel profiles that protect the tooth during impact with vegetation, it reduces power consumption, improves overall working performance and delivers excellent results even in the most demanding conditions. The advantages of the

Smooth Cut rotor are reduced power consumption during operation, increased cutting tool life, reduced stress on the tractor and mulcher transmission, and finally, reduced fuel consumption.





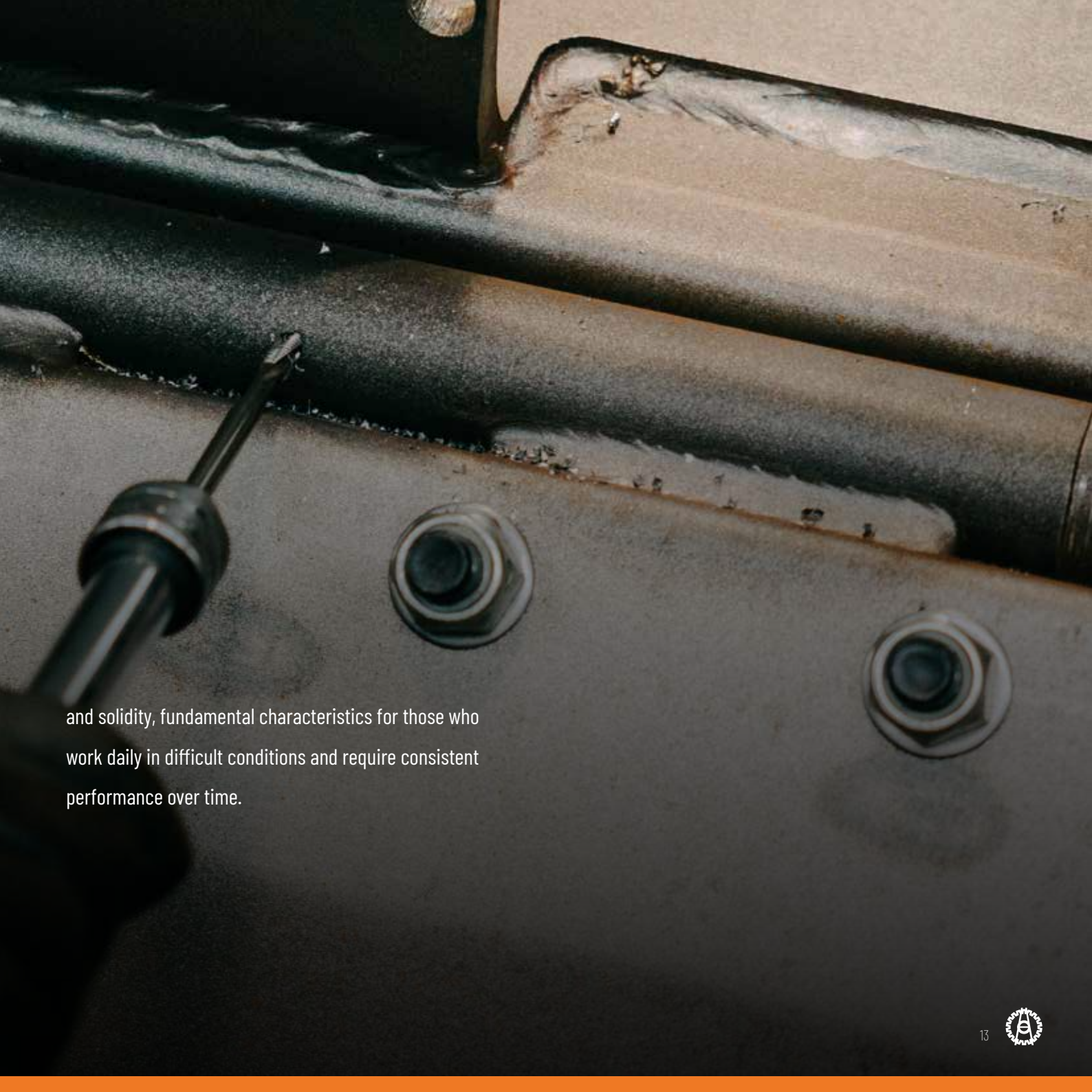
CHASSIS

IN STRENX® AND HARDOX® STEEL

The structure of Berti hydraulic mulchers FOR WHEEL AND TRACK LOADERS is made entirely of Strenx® and/or Hardox® steel, high-strength, low-specific-weight materials that ensure an excellent balance between strength, elasticity and structural precision. Each chassis is designed to ensure long-term durability. The use of these high-strength

steels allows for a lighter structure that is also resistant to torsional stress, improving the machine's manoeuvrability and reducing overall wear. The care taken in construction and the experience gained by Berti over decades of design make the boxes of its hydraulic mulcher FOR WHEEL AND TRACK LOADERS a benchmark for quality, reliability





and solidity, fundamental characteristics for those who work daily in difficult conditions and require consistent performance over time.


BERTI FLUID-BOX

VALVE BLOCK

The **Berti Fluid Box** system is designed to optimise mulcher performance by constantly monitoring key operating parameters. Thanks to its integrated functions:

- **It regulates the oil flow rate**, setting the maximum quantity directed to the motor and preventing rotor overloads and overspeeds.
- **It limits the maximum operating pressure**, protecting the motor from pressure peaks caused by sudden loads.
- **Facilitates rotor shutdown** when the machine is turned off, improving operational safety.
- **Prevents cavitation in the hydraulic system**, preserving the efficiency of the system over time.





Berti Fluid Box: simple, intelligent and reliable technology that ensures consistent performance and long life for your mulcher.

MINI/SSL

HYDRAULIC MULCHER FOR WHEEL AND TRACK LOADER



20 - 50 HP



Ø 3 cm



ROTOR: HAMMERS

TOOL: BERTI "G"



STANDARD EQUIPMENT

Belts transmission.

Counter blades.

Height adjustable levelling roller \varnothing 114 mm.

Side skids with wear undershoes.

Hydraulic cast iron gear motor with drain line.

Hydraulic valves block "Berti Fluid Box".

Protective cover for motor.

Hydraulic hoses with explosion-proof sheaths.

Without hitch.

Accident prevention protections according to EC directives.

ACCESSORIES ON REQUEST



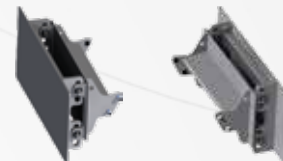
Universal skid-steer mount
(SAE J2513)



Universal skid-steer mount
with floating device (SAE J2513)



Mount bracket
with flat plate



Mount bracket with flat plate
and floating device

AF/SSL

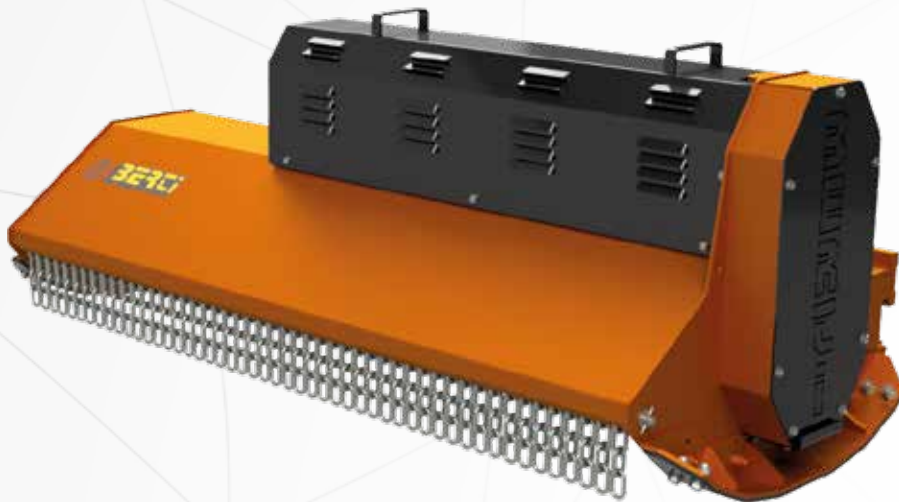
HYDRAULIC MULCHER FOR WHEEL AND TRACK LOADER



50 - 90 HP



Ø 7 cm



ROTOR: HAMMERS

TOOL: BERTI "A"



ROTOR: BLADES

TOOL: BERTI "YA"



STANDARD EQUIPMENT

Belts transmission.

Counter blades.

Height adjustable levelling roller \varnothing 139 mm.

Side skids with wear undershoes.

Mechanical side shift.

Protective cover for motor.

Hydraulic cast iron gear motor with drain line.

Hydraulic valves block "Berti Fluid Box".

Hydraulic hoses with explosion-proof sheaths.

Without hitch.

Accident prevention protections according to EC directives.

ACCESSORIES ON REQUEST



Self-levelling skid steer mount
with parallel arms
(SAE J2513)



Universal skid-steer mount
with floating device (SAE J2513)



Universal skid-steer mount
(SAE J2513)



Self-levelling mount
with flat plate and parallel arms



Mount bracket with flat plate
and floating device - E051



Hydraulic side shift



Kit diverter valve
for hydraulic side shift





KX/SSL at work



KX/SSL

HYDRAULIC MULCHER FOR WHEEL AND TRACK LOADER



50 - 90 HP



Ø 15 cm



ROTOR: SMOOTH CUT Ø 360 mm

TOOL: BERTI "XF2"



STRENX™
PERFORMANCE STEEL

HARDOX®
WEAR PLATE



STANDARD EQUIPMENT

Double chassis.

Belts transmission.

Full automatic belts adjuster.

Counter blades.

Side skids with wear undershoes.

Fixed hammers with widia tips type "XF2"

Protective cover for motor.

Hydraulic piston motor with drain line (45 cc).

Hydraulic adjustment of rear hood.

Hydraulic valves block "Berti Fluid Box".

Manometer for working pressure control.

Hydraulic hoses with explosion-proof sheaths.

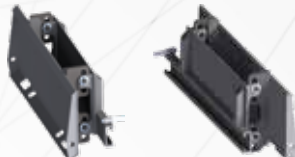
Without hitch.

Accident prevention protections according to EC directives.

ACCESSORIES ON REQUEST



Universal skid-steer mount
(SAE J2513)



Universal skid-steer mount
with floating device (SAE J2513)



Mount bracket
with flat plate



Mount bracket with flat plate
and floating device



Protective arch
mech. adjustable



Kit diverter valve
for accessories

KX/SSL AVT

HYDRAULIC MULCHER FOR WHEEL AND TRACK LOADER



50 - 90 HP



Ø 15 cm



ROTOR: SMOOTH CUT Ø 360 mm

TOOL: BERTI "XF2"



STRENX™
PERFORMANCE STEEL

HARDOX®
WEAR PLATE



STANDARD EQUIPMENT

Double chassis.

Belts trasmission.

Full automatic belts adjuster.

Counter blades.

Side skids with wear undershoes.

Fixed hammers with widia tips type "XF2"

Protective cover for motor.

Automatic Variable Torque piston motor (38-55 cc).

Hydraulic adjustment of rear hood.

Hydraulic valves block "Berti Fluid Box".

Manometer for working pressure control.

Hydraulic hoses with explosion-proof sheaths.

Without hitch.

Accident prevention protections according to EC directives.

ACCESSORIES ON REQUEST



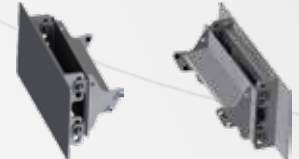
Universal skid-steer mount
(SAE J2513)



Universal skid-steer mount
with floating device (SAE J2513)



Mount bracket
with flat plate



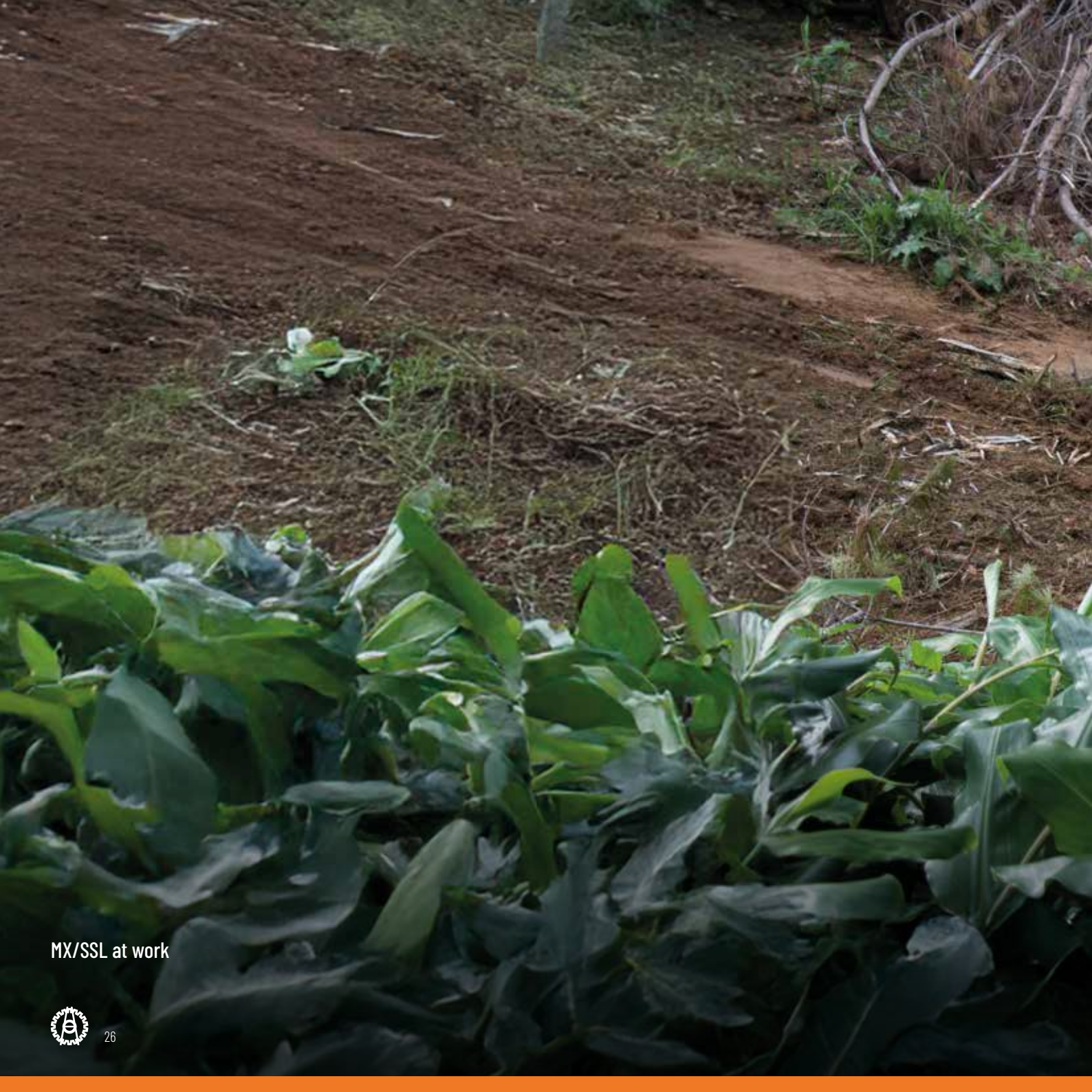
Mount bracket with flat plate
and floating device



Protective arch
mech. adjustable

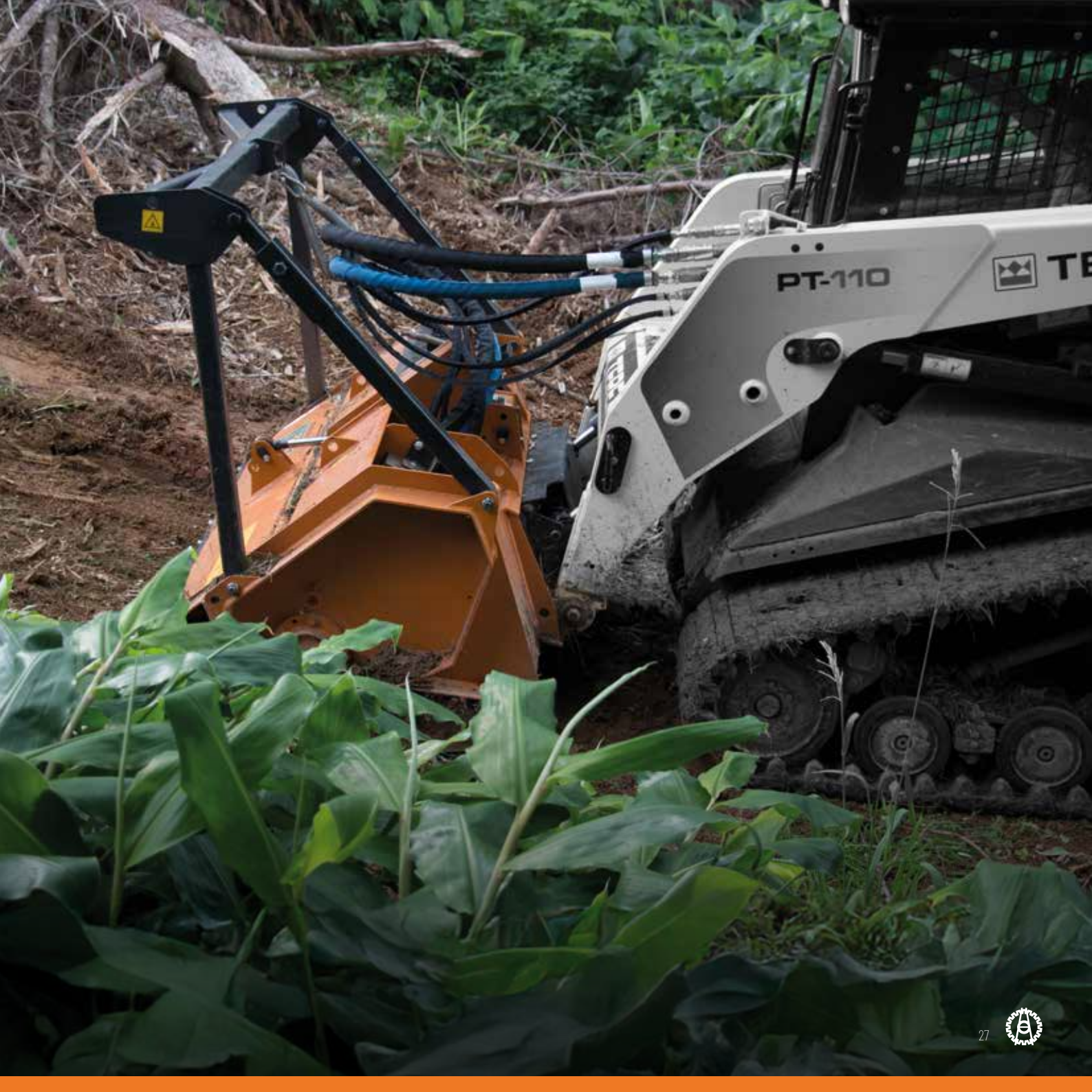


Kit diverter valve
for accessories



MX/SSL at work





MX/SSL

HYDRAULIC MULCHER FOR WHEEL AND TRACK LOADER



80 -150 HP



Ø 20 cm



ROTOR: SMOOTH CUT Ø 410 mm

TOOL: BERTI "XF1"



STRENX™
PERFORMANCE STEEL

HARDOX®
WEAR PLATE



STANDARD EQUIPMENT

Double chassis.

Belts trasmission.

Full automatic belts adjuster.

Counter blades.

Side skids with wear undershoes.

Fixed hammers with widia tips type "XF1".

Protective arch.

Protective cover for motor.

Hydraulic piston motor with drain line (56 cc).

Hydraulic adjustment of rear hood.

Hydraulic valves block "Berti Fluid Box".

Manometer for working pressure control.

Hydraulic hoses with explosion-proof sheats.

Accident prevention protections according to EC directives.

ACCESSORIES ON REQUEST



Universal skid-steer mount
(SAE J2513) standard equipment



Mount bracket with flat plate
accessory on request



Kit diverter valve
for accessories

MX/SSL AVT

HYDRAULIC MULCHER FOR WHEEL AND TRACK LOADER



80 -150 HP



Ø 20 cm



ROTOR: SMOOTH CUT Ø 410 mm

TOOL: BERTI "XF1"



STRENX™
PERFORMANCE STEEL

HARDOX®
WEAR PLATE



STANDARD EQUIPMENT

Double chassis.

Belts trasmission.

Tenditore automatico delle cinghie

Counter blades.

Side skids with wear undershoes.

Fixed hammers with widia tips type "XF1".

Protective arch.

Protective cover for motor.

Automatic Variable Torque piston motor (56-74 cc.).

Hydraulic adjustment of rear hood.

Hydraulic valves block "Berti Fluid Box".

Manometer for working pressure control.

Hydraulic hoses with explosion-proof sheaths.

Attacco fisso universale (SAE J2513).

Accident prevention protections according to EC directives.

ACCESSORIES ON REQUEST



Universal skid-steer mount
(SAE J2513) standard equipment



Mount bracket with flat plate
accessory on request










Kit diverter valve
for accessories

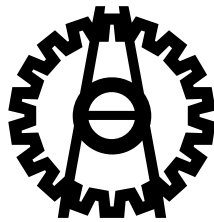
DATA

AND DIMENSION

											
MODEL	cm	n°		l/min	bar	n°	a	b	c	min	max
MINI/SSL 115	115	32	/	43-47	245-255	2	129	65	66	180	270
MINI/SSL 125	125	34	/	43-47	245-255	2	139	65	66	190	280
MINI/SSL 145	145	40	/	43-47	245-255	2	159	65	66	205	295
AF/SSL 145	145	14	42	63-67	245-255	3	169	90	80	495	680
AF/SSL 160	160	14	42	88-92	245-255	3	183	90	80	535	720
AF/SSL 180	180	16	48	88-92	245-255	3	203	90	80	575	760
AF/SSL 200	200	18	54	105-115	245-255	3	223	90	80	625	810



										
MODEL	cm	n°	l/min	bar	n°	a	b	c	min	max
KX/SSL 150	150	48	85-95	245-315	3	178	92	71	625	785
KX/SSL 170	170	54	85-95	245-315	3	198	92	71	675	845
KX/SSL 150 A.V.T.	150	48	80-110	245-315	3	178	92	71	625	785
KX/SSL 170 A.V.T.	170	54	80-110	245-315	3	198	92	71	675	845
MX/SSL 140	140	36	120-140	270-350	4	172	118	153	1135	1150
MX/SSL 160	160	42	120-140	270-350	4	192	118	153	1220	1235
MX/SSL 180	180	42	120-140	270-350	4	212	118	153	1300	1315
MX/SSL 140 A.V.T.	140	36	120-160	270-350	4	172	118	153	1135	1150
MX/SSL 160 A.V.T.	160	42	120-160	270-350	4	192	118	153	1220	1235
MX/SSL 180 A.V.T.	180	42	120-160	270-350	4	212	118	153	1300	1315



All images and information contained in this material are for illustrative purposes only.
The product may be subject to changes aimed at continuous improvement.

A background of a network diagram with grey nodes and connecting lines on a light grey gradient. The text is overlaid in white.

**A NAME
YOU CAN
TRUST**



BERTI MACCHINE AGRICOLE SPA

Via Musi 1/A-3-4

37042 Caldiero (Verona) - Italy

+39 045 61 39 711

bertima.it

info@bertima.it

follow us:

